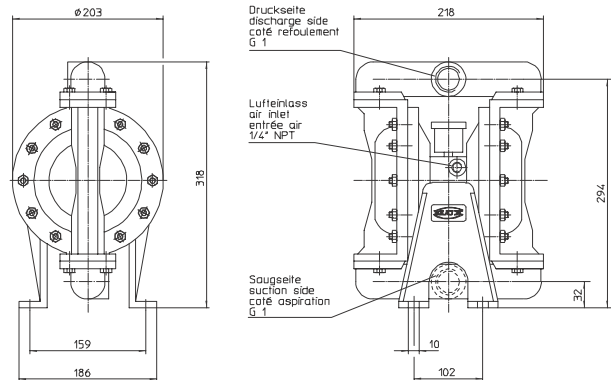


FLUX air-operated diaphragm pump FDM 25 in metallic version, 1"

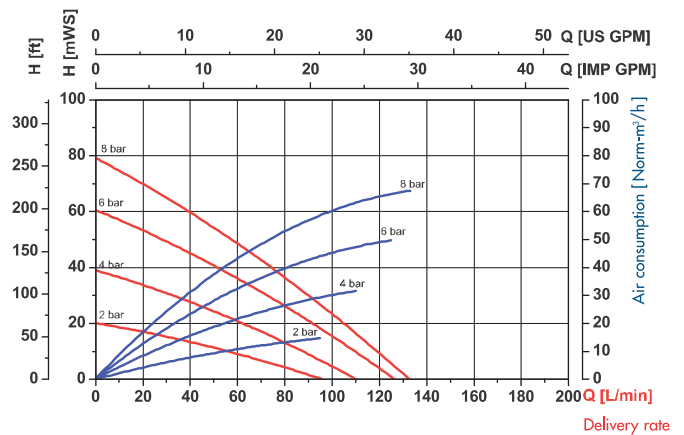
Electrically conductive for use in hazardous areas according to ATEX-Directive 2014/34/EU.



Technical Data FDM 25

Delivery rate max.	133 l/min
Operating pressure max.	8 bar
Suction head* max.	7,6 m
Max. size of solids	3,2 mm
Connection pump	
Suction side	G 1
Discharge side	G 1
Connection air	
Inlet	1/4" NPT
Outlet**	3/8" NPT**

*Dry exhaust up to 6,0 m, **with silencer



Values $\pm 10\%$ with water at 20 °C

Type	Pump housing	Diaphragm	Ball	Hub	Seal	Weight	Part No.
FDM 25 AL/NN	Aluminium	NBR	NBR	AL	NBR	8,6 kg	M25 10 000
FDM 25 AL/TT	Aluminium	PTFE	PTFE	AL	PTFE	8,6 kg	M25 10 100
FDM 25 S/TT	Stainless Steel	PTFE	PTFE	Stainless Steel	PTFE	16,3 kg	M25 20 100

Air-motor body Aluminium